

VIOLENO II.

FR. CHODIN.

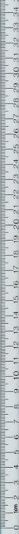
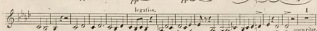
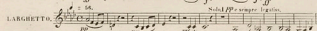
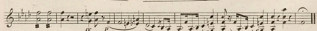
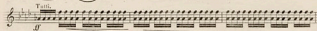
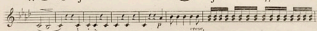
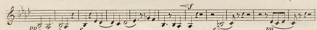
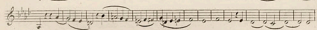
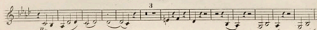
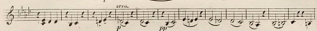
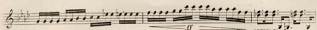
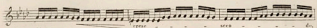
CONCERTO. *Martello.* $\text{♩} = 118$
p. legato.
a poco cres.
cres. *marcato.*
cres. *f*
f *cres.* *f* *p*
p *f* *f* *cres.* *f* *p*
pp *Solo*
stretta. *1* *molto.*
cres.
sempre p *poco rit.* *poco Tenu.* *pp* *pp*
sempre pp *dim.* *più stretta.* *1*

VIOLINO II.

sempre p
cresc.
Tutti
cresc.
f
cresc.
legato
f
cresc.
f
ff
Tempo.
sempre p
pp
poco ritto. Solo.
poco ritto. in Tempo.
pp
f
legato
dim.
cresc.
p
Tutti

VIOLINO II.

1



VIOLINO II.

The musical score for Violino II consists of two staves of music. The first staff begins with a treble clef, a key signature of two flats (B-flat and E-flat), and a 4/4 time signature. The music starts with a piano (*p*) dynamic and features a melodic line with various articulations, including slurs and accents. The second staff continues the melodic line, marked with a forte (*f*) dynamic and a *ritardando* (*rit.*) marking. The score includes several measures of complex rhythmic patterns, such as sixteenth-note runs and slurs. Dynamics range from *p* to *ff*. The score concludes with a double bar line and a final chord.

VIOLINO II.

pizz. *arco.* *pizz.* *arco.*
ritto. *pp* *p*

pizz. *arco.* *pizz.* *arco.*
pp *p* *f*

pizz. *arco.* *cresc.*
dim. col legato. *pp*

legato, poco rit. *col legato.* *legato.* *col legato.*
pp *a Tempo.*

legato sempre *colla Tempo.*
p *pp*

legato sempre *dim.* *poco arco.*
a Tempo. *p* *pizz.* *arco.* *pizz.* *arco.*

a Tempo. *p* *pizz.* *arco.* *pizz.* *arco.*

5 *arco.* *pp*
pizz.

sempre *pp* *a Tempo.*
colla. *pp*

4 *Tutti.* *Solo.*
pp *f* *pp*

