

Mendelssohn Bartholdy, Felix

Ouverture zur Fingals-Höhle

Leipzig [um 1835]

4 Mus.pr. 18720#Beibd.1

Copyright

Das Copyright für alle Webdokumente, insbesondere für Bilder, liegt bei der Bayerischen Staatsbibliothek. Eine Folgeverwertung von Webdokumenten ist nur mit Zustimmung der Bayerischen Staatsbibliothek bzw. des Autors möglich. Externe Links auf die Angebote sind ausdrücklich erwünscht. Eine unautorisierte Übernahme ganzer Seiten oder ganzer Beiträge oder Beitragsteile ist dagegen nicht zulässig. Für nicht-kommerzielle Ausbildungszwecke können einzelne Materialien kopiert werden, solange eindeutig die Urheberschaft der Autoren bzw. der Bayerischen Staatsbibliothek kenntlich gemacht wird.

Eine Verwertung von urheberrechtlich geschützten Beiträgen und Abbildungen der auf den Servern der Bayerischen Staatsbibliothek befindlichen Daten, insbesondere durch Vervielfältigung oder Verbreitung, ist ohne vorherige schriftliche Zustimmung der Bayerischen Staatsbibliothek unzulässig und strafbar, soweit sich aus dem Urheberrechtsgesetz nichts anderes ergibt. Insbesondere ist eine Einspeicherung oder Verarbeitung in Datenbanken ohne Zustimmung der Bayerischen Staatsbibliothek unzulässig.

The Bayerische Staatsbibliothek (BSB) owns the copyright for all web documents, in particular for all images. Any further use of the web documents is subject to the approval of the Bayerische Staatsbibliothek and/or the author. External links to the offer of the BSB are expressly welcome. However, it is illegal to copy whole pages or complete articles or parts of articles without prior authorisation. Some individual materials may be copied for non-commercial educational purposes, provided that the authorship of the author(s) or of the Bayerische Staatsbibliothek is indicated unambiguously.

Unless provided otherwise by the copyright law, it is illegal and may be prosecuted as a punishable offence to use copyrighted articles and representations of the data stored on the servers of the Bayerische Staatsbibliothek, in particular by copying or disseminating them, without the prior written approval of the Bayerische Staatsbibliothek. It is in particular illegal to store or process any data in data systems without the approval of the Bayerische Staatsbibliothek.

0049495

O U V E R T U R E

ZU

Fingals-Höhle

(Hebriden)

VON

Felix Mendelssohn-Bartholdy

für das Piano-Forte

arrangirt

VON

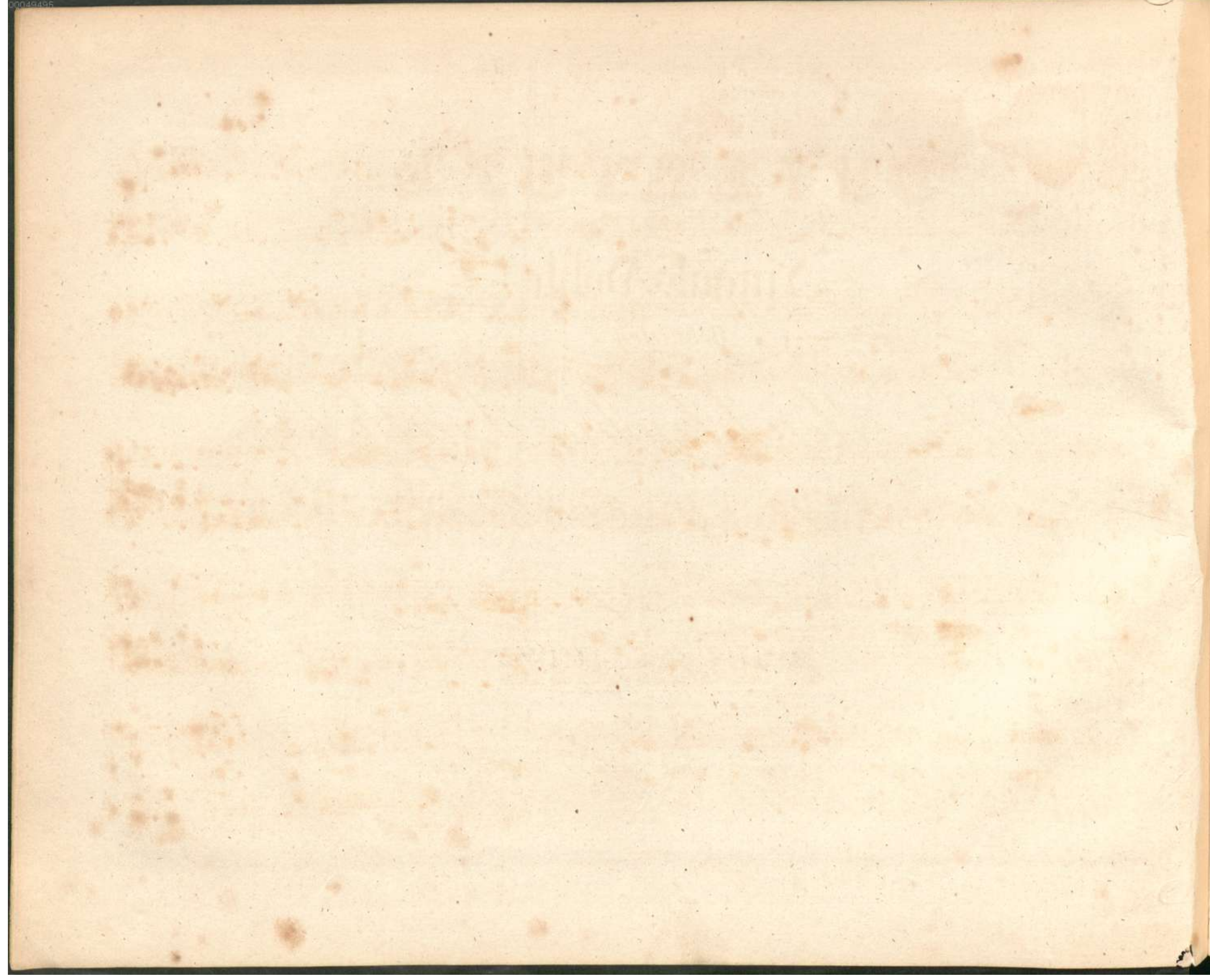
F. MOCKWITZ.

Eigenthum der Verleger.

Leipzig, bei Breitkopf & Härtel.

Pr: 12 Gr.

Eingetragen in das Veräns-Archiv.



M. M. ♩ = 104.

Allegro moderato.

di F. Mendelssohn.

OUVERTURE.

Fag. *p*

Fl: Ob. Cl. *p* Viol.

f sf dim sf p

iz cresc f sf dim

pp

v. s.

Fl. Ob.

pp *sf* *sf* *p* *sf* *p*

Fag.

Fag.

Viol.

cresc *ff*

pp *pp*

p *mf*

cresc *pp* *p*

Cantabile

p *sf*

cresc *p*

dol *dim* Fl.

Clar. *pp* *cresc* 8va..... *f* Ped

-cen- do

loco Ped

sf sf sf sf 8va.....

ff Ped Fl. Ob. Clar. loco Ped Cor. e Trom.

Viol. Fl. pp ff sf pp sf

pp Cor. Viola. sempre p

Clar.

Cor. *mf* Cor. *p* Fl. Ob. *dim*

This system contains two staves. The upper staff is for the Cor (Trumpet) and the lower staff is for the Fl. Ob. (Flute/Oboe). The Cor part begins with a melodic line in G major, marked *mf*. The Fl. Ob. part provides harmonic support, starting with a *p* dynamic. Both parts feature a *dim* (diminuendo) instruction towards the end of the system.

p *cantabile* Viol.

This system contains two staves. The upper staff is for the Violin, marked *cantabile* and *p*. The lower staff provides harmonic accompaniment. The Violin part features a melodic line with a *cantabile* character.

Ped *pp* *cresc*

This system contains two staves for the Piano. The upper staff has a *Ped* (pedal) marking and a *pp* (pianissimo) dynamic. The lower staff has a *cresc* (crescendo) instruction. The piano accompaniment is dense and rhythmic.

Ob. *f* *dim* *p*

This system contains two staves. The upper staff is for the Oboe, marked *f* (forte) and *dim* (diminuendo). The lower staff provides harmonic support, marked *p* (piano).

cresc *f* *dim*

This system contains two staves for the Piano. The upper staff has a *cresc* (crescendo) instruction. The lower staff has a *f* (forte) dynamic and a *dim* (diminuendo) instruction.

Fl. Ob. Cl. *pp* *sempre pp.*

This system contains the first two staves of music. The upper staff is for Flute, Oboe, and Clarinet, and the lower staff is for the piano accompaniment. The music begins with a piano (*p*) dynamic and continues with a *pp* dynamic. The upper staff features a melodic line with various ornaments and slurs, while the lower staff provides a harmonic accompaniment with chords and moving lines.

poco cresc

This system contains the third and fourth staves of music. The piano accompaniment continues with a *poco cresc* (poco crescendo) dynamic marking. The upper staff continues with its melodic line, showing some chromatic movement and slurs.

sempre cresc

This system contains the fifth and sixth staves of music. The piano accompaniment is marked *sempre cresc* (sempre crescendo). The upper staff continues with its melodic line, showing some chromatic movement and slurs.

f *più f*

This system contains the seventh and eighth staves of music. The piano accompaniment is marked *f* (forte) and *più f* (più forte). The upper staff continues with its melodic line, showing some chromatic movement and slurs.

ff

This system contains the ninth and tenth staves of music. The piano accompaniment is marked *ff* (fortissimo). The upper staff continues with its melodic line, showing some chromatic movement and slurs.

sf

marcato

Fl.

Viol.

p

Violc.

Violc.

Cl. Cor.

Viol.

sf

sf

cresc

f

dim

p

Clar.

pp

tranquillo assai

poco ritard.

a Tempo animato.

sf p cresc

sf ff

sf

sempre f con fuoco

Handwritten musical score for piano and orchestra, consisting of five systems of staves. The notation includes treble and bass clefs, key signatures, and various musical symbols such as slurs, accents, and dynamic markings. The score concludes with performance instructions for other instruments.

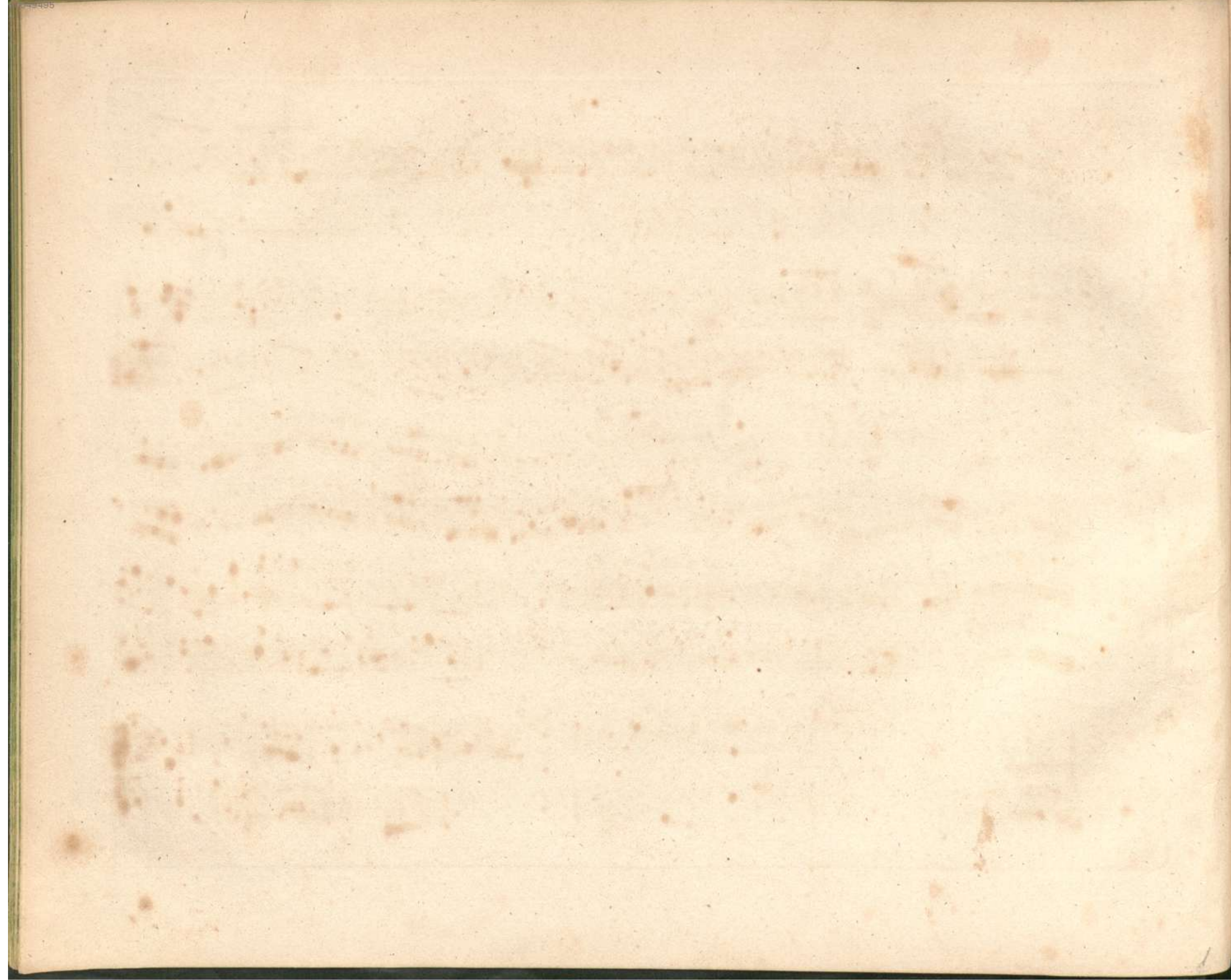
System 1: Treble and bass staves with complex rhythmic patterns and slurs.

System 2: Treble and bass staves. Dynamics include *ff* (fortissimo) and *>* (accent).

System 3: Treble and bass staves. Dynamics include *sf* (sforzando) and *sf*.

System 4: Treble and bass staves. Dynamics include *sf*, *ff*, and *tr* (trill).

System 5: Treble and bass staves. Dynamics include *ff*, *p* (piano), *pp* (pianissimo), and *ppp* (pianississimo). Performance instructions include *8va* (octave), *loco*, *Clar.* (Clarinet), *Fl.* (Flute), and *Ped* (Pedal).

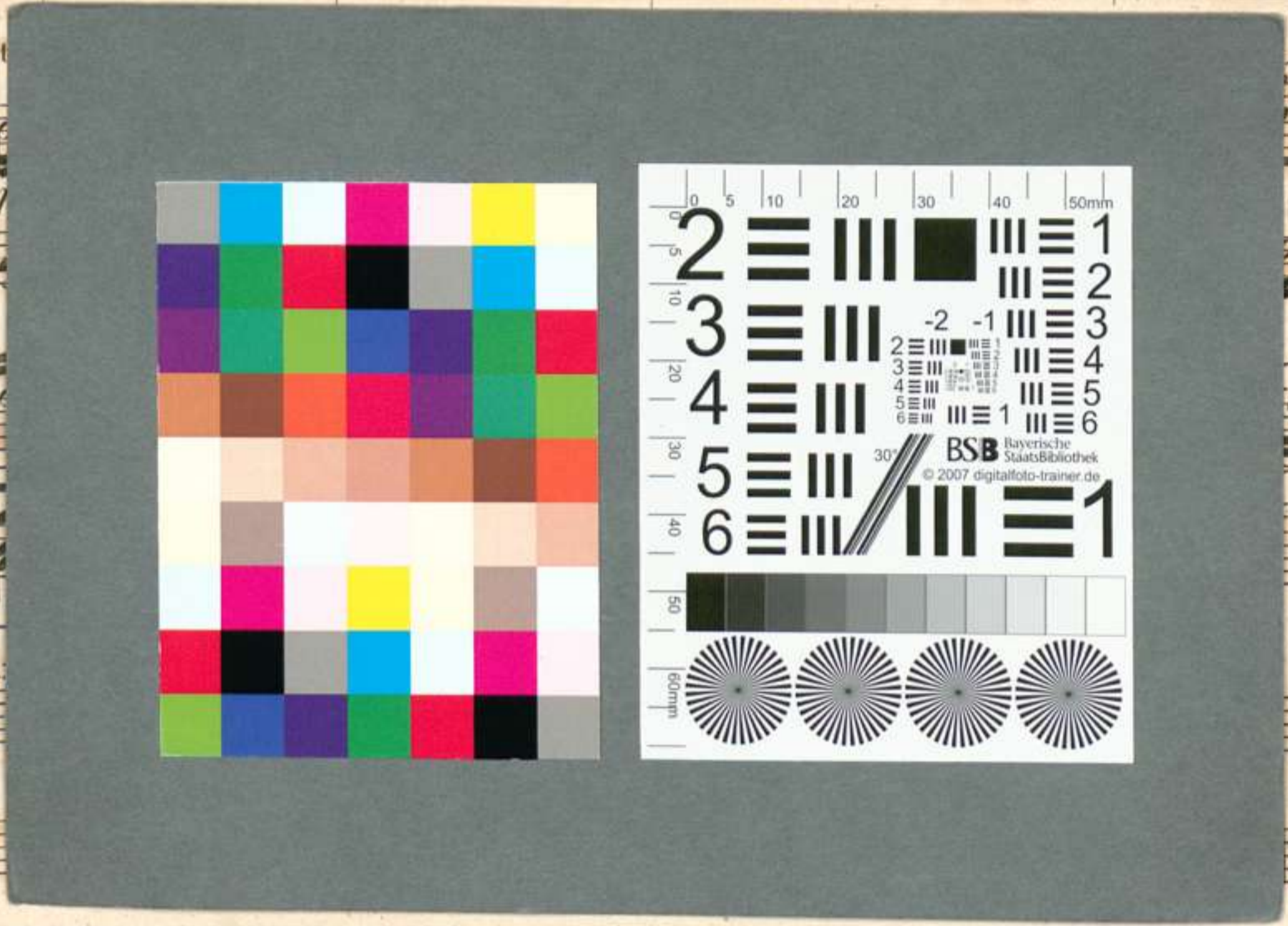


Handwritten musical score system 1, featuring a grand staff with treble and bass clefs. The music consists of chords and melodic lines. The tempo marking *poco ritard.* is present in the right-hand part.

Handwritten musical score system 2, featuring a grand staff. The tempo marking *a Tempo animato* and dynamic marking *sf* are visible.

Handwritten musical score system 3, featuring a grand staff with treble and bass clefs.

Handwritten musical score system 4, featuring a grand staff with treble and bass clefs.



Handwritten musical score system 5, featuring a grand staff with treble and bass clefs.

Handwritten musical score system 6, featuring a grand staff with treble and bass clefs. The dynamic marking *ff* is visible.

Handwritten musical score system 7, featuring a grand staff with treble and bass clefs.

Handwritten musical score system 8, featuring a grand staff. The tempo marking *sempre f con fuoco* is present.